



Botanic

FA22

INNOVATIONS®



Table of Contents

Introduction	p.02
Bloque	p.03
Bursa	p.07
Whistler	p.11
Normandy	p.15
Holland	p.19
Flanders	p.23
Agave	p.27
Ramina	p.31
Anvers	p.35
Framework	p.39
Lido	p.43
Contact	p.47

Botanic

Botanic draws inspiration from natural materials and plants, stripping down to essential elements to showcase the raw, unconcealed nature and unique beauty of materials like sisal, linen, and recycled yarns. The 11 wallcoverings in the FA22 collection highlight the allure of ornate textures found in nature and add depth and warmth to any room.

The collection focuses on organic materials such as the luxe linen Normandy and grasscloth Agave, tiled patterns like Bloque and Lido that incorporate handmade techniques, and elevated vinyl wallcoverings including Ramina and Anvers that embody the look and feel of natural fibers.

The beauty of natural linen is celebrated in Flanders, Holland, and Normandy, with each of them exploring a different weaving technique. Similarly, the organic texture of sisal is explored in the traditional natural weave of Agave.

Traditional tiled patterns are interpreted in new ways, using the inherent beauty of the materials to form statement wallcoverings in bold detailed patterns, like the shaved wood of Bloque, the hand-painted mosaic of Lido, and the woven matlike texture of Framework.

Elevated design meets durability in this collection with the PVC free Type II wallcovering Bursa, which has the texture of raw silk, the Type II vinyl Anvers, which recreates the delicate natural draping of linen, and the robust color palette of the Type II vinyl Ramina, which mimics the intricate texture of grasscloth.

Nature also inspires a calming color palette in this collection, ranging from tranquil blues and forest greens to the warm terracotta woven throughout the collection. New approaches are used to add color to raw materials, achieving softer pastel hues and earth tones like in the natural cork wallcovering Whistler, while the sisal wallcovering Agave receives a modern update in softer colors.

The wallcoverings in this collection are unpretentious in their beauty. They tell the story of the earth and illustrate how natural textures possess the ability to stimulate closeness with nature. Recreate the peaceful atmosphere of spending time in nature and design a warm and welcoming space with a grounding connection to the outdoors with Innovations' FA22 Collection, Botanic.



Bloque

Hand-shaved strips of wood veneer in varying widths are dyed and layered over a metallic backing, allowing slivers of foil to shine through to create movement and interest. The finished pattern is completed with a topcoat of dye to give the layered wood wallcovering a stunning tone-on-tone look. The statement pattern of Bloque draws inspiration from the soft forms of natural wooden floor tiles and creates a large-scale geometric design on the wall.



BLQ-05 RECLAIMED



Explore Bloque

Sold By: 4LY increments (min order 12LY)

Roll Size: 12LY (11 m)

Composition: Wood Veneer

Backing: Foil Backing and Non-Woven

Repeat: H: 36" V: 36" (H: 91cm V: 91cm)

Width: 36" (91 cm)

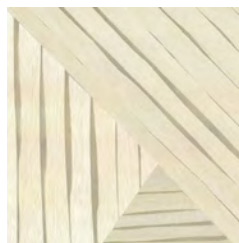
Weight: 11 oz/LY (380 gsm)

Fire Rating: ASTM E84 — Class A

Installation: Medium Traffic

Seaming: Noticeable Seams





BLQ-01 Sunbleached



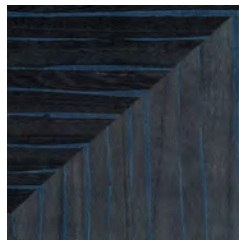
BLQ-02 Whitewash



BLQ-03 Natural



BLQ-04 Weathered



BLQ-05 Reclaimed

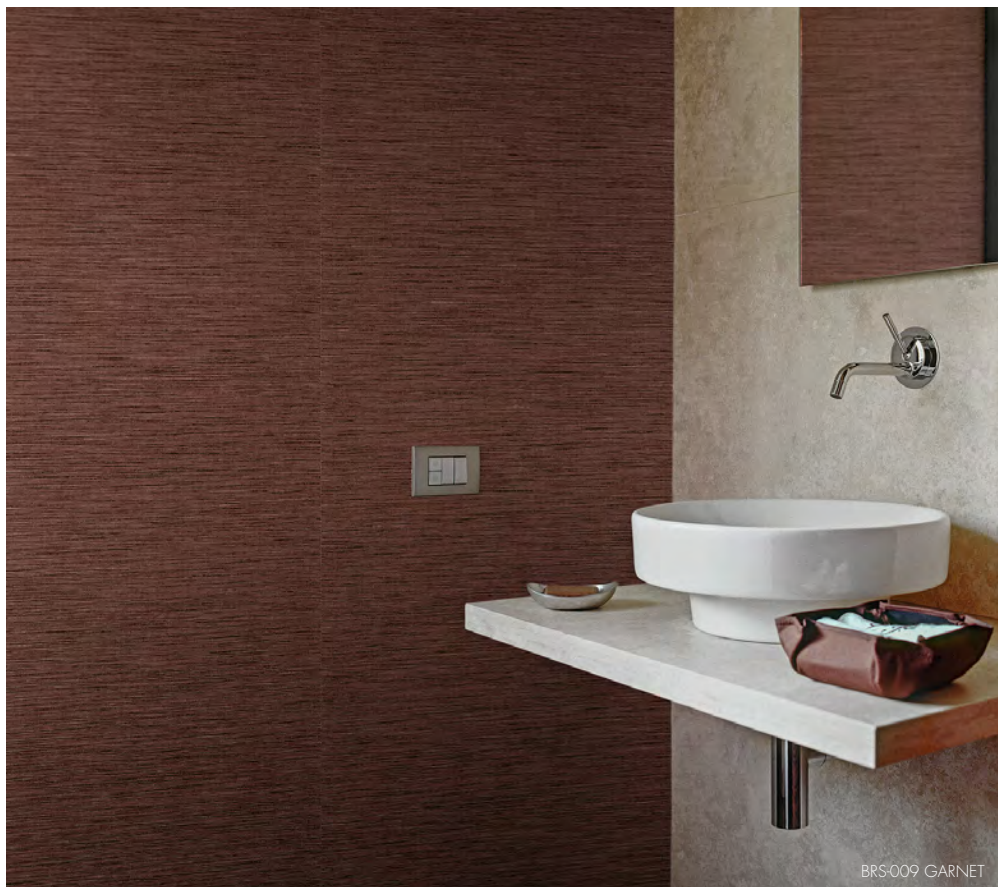
The image shows a close-up of several overlapping samples of faux silk wallcovering. The top-left sample is a dark, rich brown with a fine, vertical ribbed texture. The main sample, which is the largest and most prominent, is a light beige or cream color with a similar fine, vertical ribbed texture. A third sample, partially visible at the bottom, is a slightly darker shade of beige. The samples are layered diagonally across the frame, creating a sense of depth and showcasing the texture of the material.

Bursa

Innovations is excited to offer a PVC free vinyl alternative in an accessible, eco-friendly faux silk wallcovering. Constructed of an Olefin composite and composed of 20% recycled material, Bursa offers the same feel and performance as an elevated vinyl with high durability and an easy to clean surface. This Type II wallcovering is suitable for any high traffic interior. Named after a famous city in Turkey along the Silk Road, the impressive silk-like texture is enhanced by a palette of neutrals and jewel tones with subtle color variations.



BRS-003 MORGANITE



Explore Bursa

Sold By: per LY (10LY min order)

Roll Size: 30LY (27 m)

Composition: Olefin Composite

Backing: Osnaburg

Repeat: Non-Match

Width: 54" (137 cm)

Weight: 20 oz/LY (452 gsm)

Fire Rating: ASTM E84 — Class A
EN13501-1: Euroclass B

Installation: High traffic

Seaming: Seamless

Durability: Type II



BRS-001 Opalite



BRS-002 Quartz



BRS-003 Morganite



BRS-004 Moonstone



BRS-005 Agate



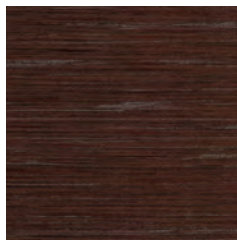
BRS-006 Hematite



BRS-007 Tourmaline



BRS-008 Emerald



BRS-009 Garnet



BRS-010 Lapis

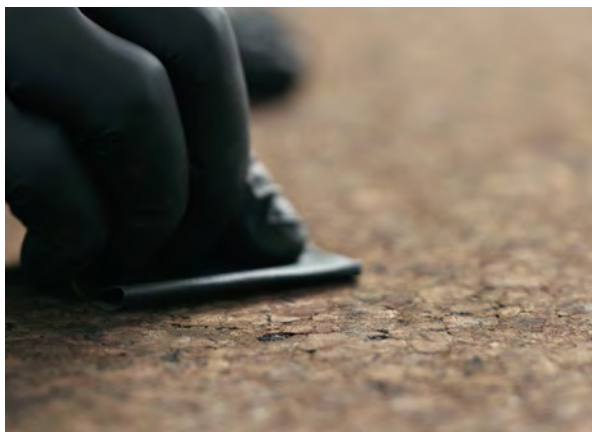
A roll of cork wallcovering with a gravel pattern. The roll is partially unrolled, showing the textured surface of the cork. The background is a solid light color.

Whistler

Whistler takes its name from the oldest cork oak tree in Portugal, where most of the world's cork is sourced. Gravel cork is pressed into thin sheets that hold dye extremely well and allow Whistler to achieve its rich coloration. The cork is adhered onto a black metallic backing with subtle shimmer, and then multiple layers of dye are applied. This process creates both beautiful soft pastel hues and a more durable finish on this exquisite cork wallcovering that creates a timeless look and a welcoming space.



WHL-09 LISBON



Explore Whistler

Sold By: 4LY increments (min order 12LY)

Roll Size: 12LY (11 m)

Composition: Cork/Metallic Leaf

Backing: Non-Woven

Repeat: Non-Match

Width: 36" (91 cm)

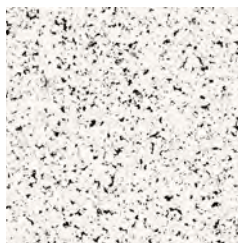
Weight: 7 oz/LY (237 gsm)

Fire Rating: ASTM E84 — Class A

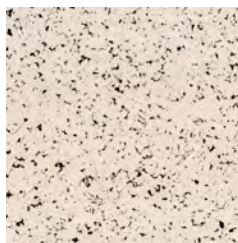
Installation: Medium traffic

Seaming: Minimal Seams

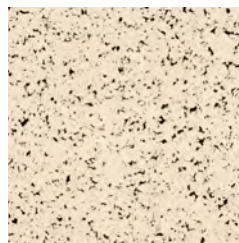




WHL01 Amadora



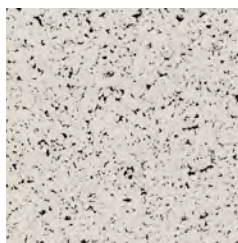
WHL02 Santo



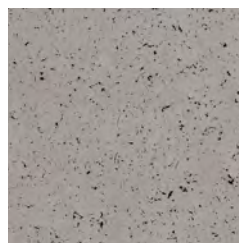
WHL03 Braga



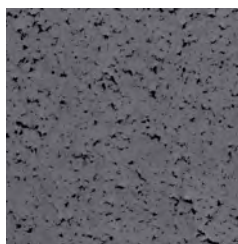
WHL04 Evora



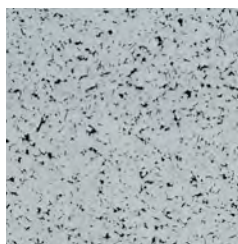
WHL05 Beja



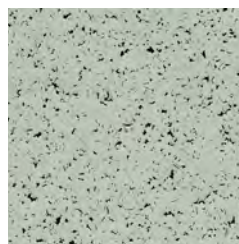
WHL06 Faro



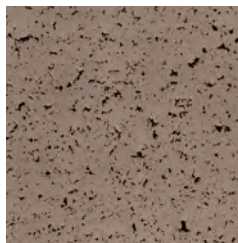
WHL07 Garda



WHL08 Lagos



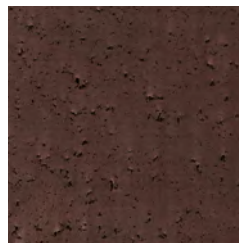
WHL09 Lisbon



WHL010 Porto



WHL011 Sintra



WHL012 Tomar



Normandy

Normandy is crafted of the finest quality linen from Europe, tightly woven in a herringbone pattern and finished with a stain repellent finish for enhanced durability. Available in colors ranging from a soft beige to a rich black, the tight weave shows contrast and gives the illusion of subtle vertical stripes of varying widths on this refined textile wallcovering that adds a touch of luxury to any room.



NRM-03 BELUGA





Explore Normandy

Sold By: per LY (6LY min order)

Roll Size: 55LY (50 m)

Composition: Linen

Backing: 70% Woodpulp/30% Polyester

Repeat: Non-Match

Width: 54" (137 cm)

Weight: 15 oz/LY (339 gsm)

Fire Rating: ASTM E84 — Class A

EN13501-1: Euroclass B

Installation: Medium traffic

Seaming: Seamless



NRM-01 Flax



NRM-02 Nimbus



NRM-03 Beluga



NRM-04 Oxford



NRM-05 Raven

A roll of Flanders linen wallcovering is shown in the upper left corner, partially unrolled to reveal the coarse, textured weave of the material. The roll is dark in color, and the texture is clearly visible. The background is a light, neutral color, providing a stark contrast to the dark, textured material.

Flanders

The pure linen of Flanders is woven in a pattern that mimics cross-stich needlework, allowing the raw material to shine through. This luxe linen is treated with a stain repellent finish, allowing for installation in a wide range of settings. The neutral color palette of this linen wallcovering adds sophistication and rich natural texture to any interior.



FLN-04 COCOA



FIN-01 Heather

Explore Flanders

Sold By: per LY (3LY min order)

Roll Size: 5.5LY (50 m)

Composition: Linen

Backing: 70% Woodpulp/30% Polyester

Repeat: Non-Match

Width: 54" (137 cm)

Weight: 16 oz/LY (362 gsm)

Fire Rating: ASTM E84 — Class A

EN13501-1: Euroclass B

Installation: Medium Traffic

Seaming: Minimal Seams



FIN-01 HEATHER



FIN-02 Bobbin



FIN-03 Pepper



FIN-04 Cocoa



FIN-05 Jet



Holland

A relaxed traditional linen wallcovering is pared down to the essential elements with Holland. The soft colorways enhance the woven pattern and allow the organic material to shine, while the open weave creates an enticingly light and airy feel. Holland is finished with a stain repellent finish that makes this a versatile and functional linen textile wallcovering for any environment.



HLD-05 EVENING





HLD-03 FOG



HLD-01 Rice



HLD-04 Carbon



HLD-02 Natural



HLD-05 Evening



HLD-03 Fog

Explore Holland

Sold By: per LY (6LY min order)

Roll Size: 55LY (50 m)

Composition: Linen

Backing: 70% Woodpulp/30% Polyester

Repeat: Non-Match

Width: 54" (137 cm)

Weight: 13 oz/LY (294 gsm)

Fire Rating: ASTM E84 — Class A

EN13501-1: Euroclass B

Installation: Medium traffic

Seaming: Minimal Seams



Agave

Agave is a sophisticated natural woven grasscloth wallcovering made from sisal and cotton in a contemporary color palette of 14 shades. Subtle hues of blue and gray and neutral tones enhance the pure look of the sisal fibers and add texture, depth and warmth to any room. The delicate weave can complement bold statement wallcoverings or stand on its own.



AGV-10 SALVADOR



AGV-15 PAULISTA

Explore Agave >

Sold By: 4LY increments (min order 12LY)

Roll Size: 12LY (11 m)

Composition: Sisal/Cotton Yarn

Backing: Paper

Repeat: Non-Match

Width: 36" (91 cm)

Weight: 6 oz/LY (203 gsm)

Fire Rating: ASTM E84 — Class A

Installation: Medium traffic

Seaming: Noticeable Seams





AGV01 Franca



AGV02 Brasília



AGV03 Palmas



AGV04 Joinville



AGV05 Londrina



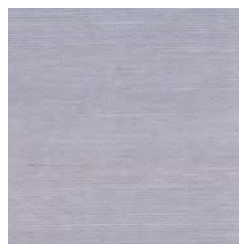
AGV06 Maringa



AGV07 Rio



AGV08 Petropolis



AGV09 Ceylon



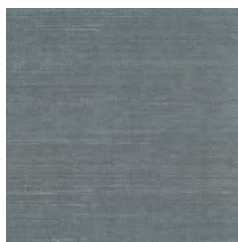
AGV10 Salvador



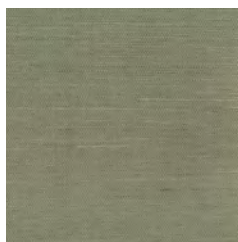
AGV11 Serra



AGV12 Olinda



AGV13 Santos



AGV14 Vitoria



AGV15 Paulista

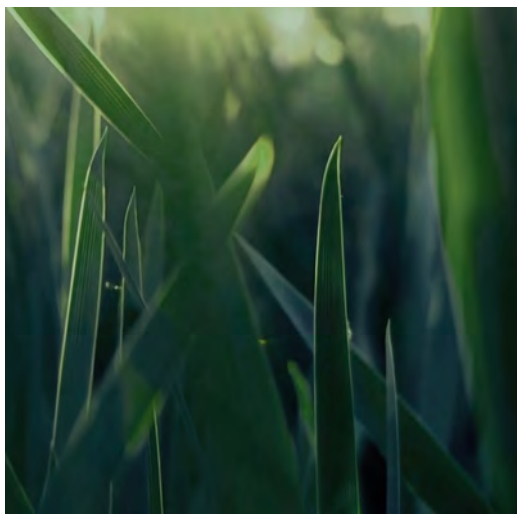


Ramina

Named after the Ramie plant that grasscloth fiber is often made from, Ramina is a Type II vinyl wallcovering that replicates the organic texture of grasscloth in a diverse color palette, ranging from subtle neutrals to rich terracotta and forest green. The light crosshatch pattern adds depth to any space. As a standalone or paired with a feature wall, Ramina is a durable solution to achieve a natural look.



RAM-013 FOREST



Explore Ramina



Sold By: per LY (10LY min order)

Roll Size: 30LY (27 m)

Composition: Vinyl

Backing: Non-Woven

Repeat: Non-Match

Width: 54" (137 cm)

Weight: 20 oz/LY (452 gsm)

Fire Rating: ASTM E84 — Class A

EN13501-1: Euroclass B

Installation: High traffic

Seaming: Minimal Seams

Durability: Type II





RAM-001 Chalk



RAM-002 Powder



RAM-003 Ivory



RAM-004 Ecru



RAM-005 Cerulean



RAM-006 Cloud



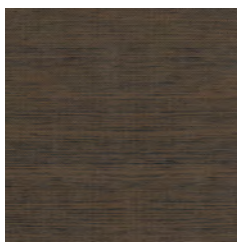
RAM-007 Silver



RAM-008 Stone



RAM-009 Mink



RAM-010 Chocolate



RAM-011 Sepia



RAM-012 Nettle



RAM-013 Forest



RAM-014 River



Anvers

It took over two years to develop the remarkable detailed texture of this Type II vinyl wallcovering that portrays the natural pleated texture and draping of our bestselling Antwerp linen. A unique embossing roller was created to help achieve new depths in texture for a vinyl wallcovering. Anvers gives the illusion of movement and evokes the warmth of raw linen in a high-performance solution that meets the demands of high traffic spaces.



AVR-013 WARNER



AVR004 CALDWELL



Explore Anvers

Sold By: per LY (10LY min order)

Roll Size: 30LY (27 m)

Composition: Vinyl

Backing: Osnaburg

Repeat: Non-Match

Width: 54" (137 cm)

Weight: 20 oz/LY (452 gsm)

Fire Rating: ASTM E84 — Class A

EN13501-1: Euroclass B

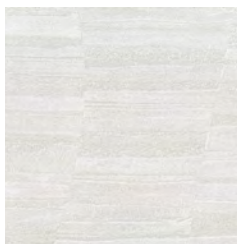
Installation: High traffic

Seaming: Minimal Seams

Durability: Type II



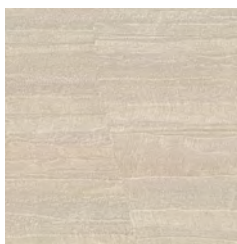
AVR-001 Abrams



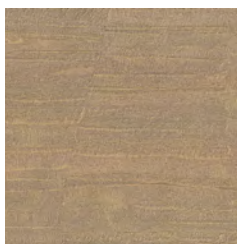
AVR-002 Bennett



AVR-003 Bonds



AVR-004 Caldwell



AVR-005 Hampton



AVR-006 Hicks



AVR-007 James



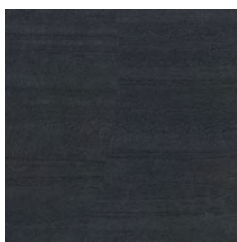
AVR-008 May



AVR-009 Powers



AVR-010 Scott



AVR-011 Snyder



AVR-012 Taylor



AVR-013 Warner



AVR-014 Wood



AVR-015 Upton



Framework

Recycled cellulose yarn, polyester yarn, and paper are individually hand-dyed and then woven together by hand in a traditional tiled pattern that evokes Japanese bamboo mats in this specialty wallcovering. The eye-catching soft metallic colorways of Framework are accented by repurposed matte yarns, adding new levels of texture and dimension to the wall that emit an overall sense of order and calm.



FMK-06 COBALT





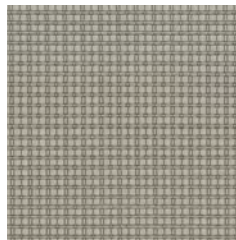
FMK-01 White Gold



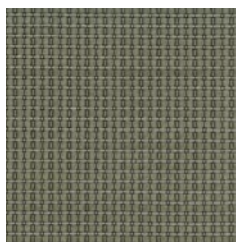
FMK-02 Light Stone



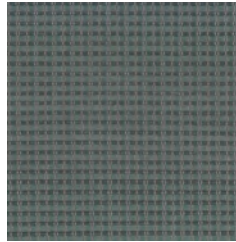
FMK-03 Sterling



FMK-04 Brushed Steel



FMK-05 Nickel



FMK-06 Cobalt



Explore Framework

Sold By: 4LY increments (min order 12LY)

Roll Size: 12LY (11 m)

Composition: Cellulose/Polyester

Backing: Non-Woven

Repeat: Non-Match

Width: 36" (91 cm)

Weight: 17 oz/LY (576 gsm)

Fire Rating: ASTM E84 — Class A

Installation: Medium traffic

Seaming: Noticeable Seams



Lido

A hand-painted mosaic pattern is transferred to a digital format for printing in this striking textile wallcovering that blends traditional and modern media. Neutral tiles are accented with tranquil blues and earth tones, creating a calming environment as if relaxing by a pool, thus inspiring the name Lido which is British for swimming pool. Lido's watercolor design is crafted of polyester yarns that are individually glued to a non-woven backing, showcasing the unique pattern of this textile wallcovering that doubles as a stunning work of art on the wall.



IDO-05 LYONS

Explore Lido

Sold By: 4LY increments (min order 12LY)

Roll Size: 12LY (11 m)

Composition: Polyester

Backing: Non-Woven

Repeat: H: 13" V: 24"

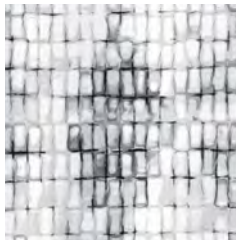
Width: 40" Untrimmed (102 cm)

Weight: 10 oz/LY (300 gsm)

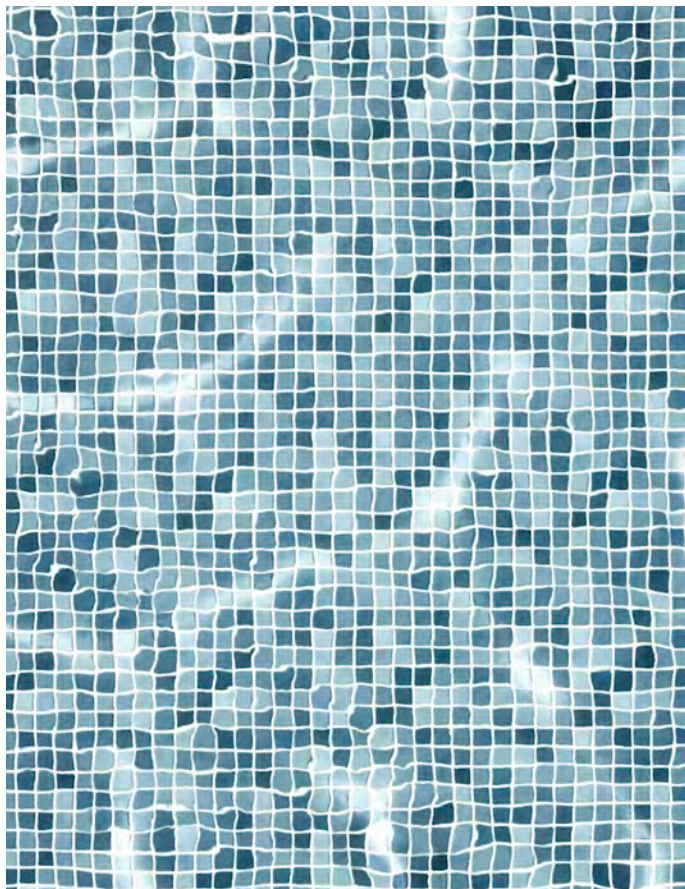
Fire Rating: ASTM E84 — Class A

Installation: Medium traffic

Seaming: Seamless

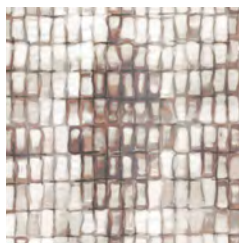


LIDO-01 Astoria

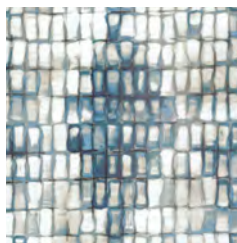




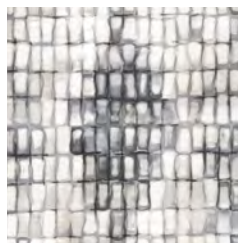
LDO-02 Turner



LDO-03 Sargent



LDO-04 Hamilton



LDO-05 Lyons



LDO-04 HAMILTON



Contact Us

sales@innovationsusa.com

innovationsusa.com

800.227.8053